



**PENTI-M ENGINEERING**  
A U S T R A L I A

# **CAPABILITY STATEMENT**



---

# WHERE PRECISION MEETS EXCELLENCE

---

*Specialising in precision engineering and manufacturing. We conquer problems that others can't solve.*



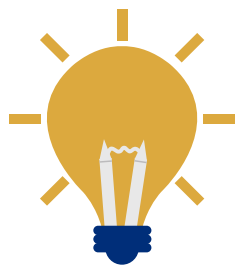
Adaptable and flexible, our family owned and operated business in Rockhampton has built our reputation of quality and excellence right from day 1. We have been trusted by the Power Generation, Energy, Rail, and Mining industries for over 30 years.

---

## MANAGEMENT SUMMARY

Our core values are our point of difference and set us apart from the competition:

- Engineering with excellence
- Youth and experience, powering innovation
- On-time, In-time, First time, Every time
- Solving the customer's problems and exceeding expectations
- Investing in new technology and equipment
- Proudly maintaining 100% customer satisfaction



**100%**

**FOCUS ON SOLVING  
PROBLEMS**



**CONSISTENTLY  
ACHIEVING  
EXCELLENCE**

---

## LOOKING FORWARD

With emerging technologies and our vast experience in multiple engineering sectors, we are loaded and ready to expand into the Space, Defence, and Aerospace industries.



# **SPECIALTIES**

## **5 AXIS SIMULTANEOUS CNC MACHINING**



**Featuring a climate controlled workspace, our 5 Axis CNC Machining capabilities are world-class.**

**Whether its high precision components requiring critical tolerances or complex shapes never produced before, our experienced team will see it through.**



# **SPECIALTIES**

## **HEAT RESISTANT SUPER ALLOYS MANUFACTURING**



**We have developed knowledge and expertise in special alloys and have consistently manufactured many critical components, without failure. The outcomes have seen impressive results, with our components better than OEM.**

# **SPECIALTIES**

## **EXOTIC MATERIAL WELDING & METAL SPRAYING**



**With a diverse range of specialised welding and metal spraying equipment, we offer a full range of services including thermal arc spraying, hot and cold metal spraying, plastic powder spraying, corrosion protection spraying, and all specialised welding services.**

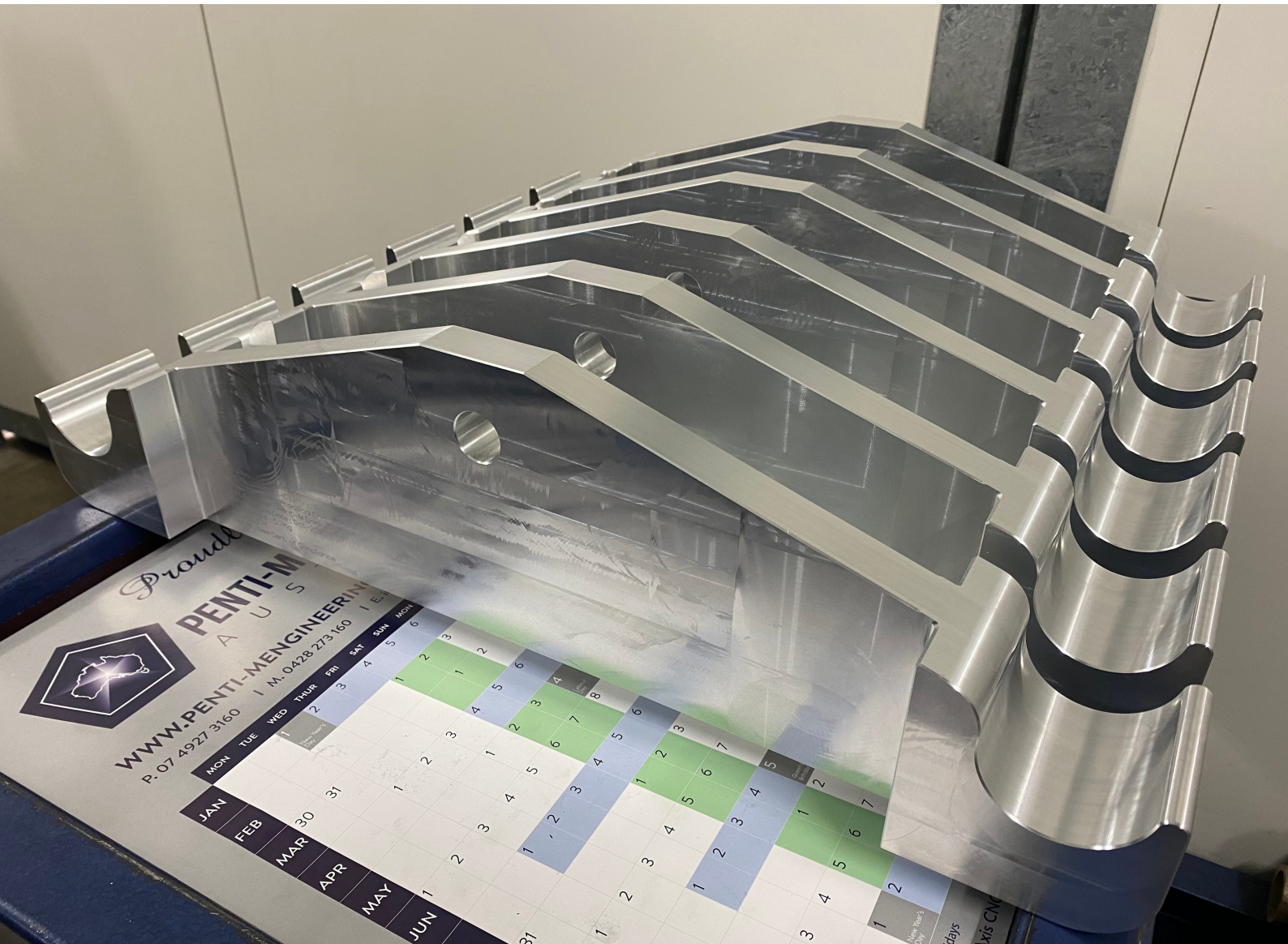
**Unique and exotic materials include:**

- magnesium
- copper
- bronze
- cast iron
- nickel
- cobalt
- ceramics



# SPECIALTIES

## PRECISION MACHINING & GRINDING

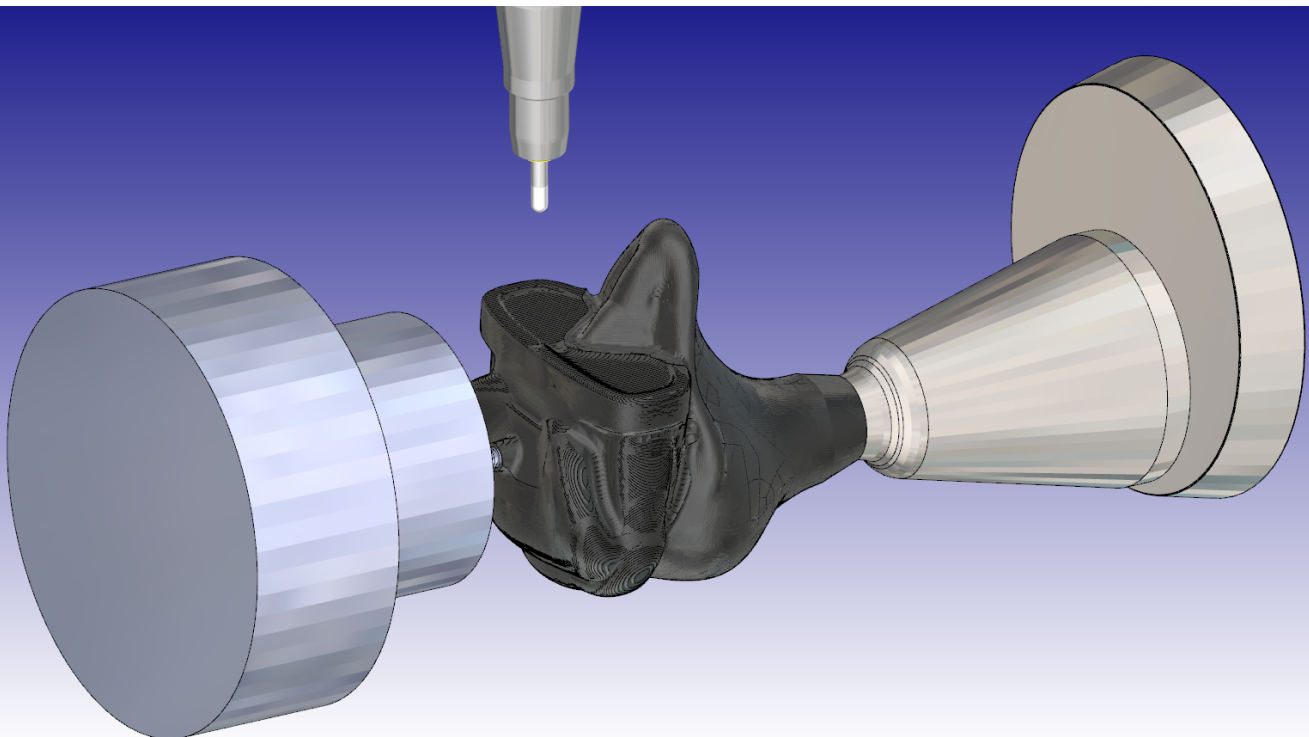
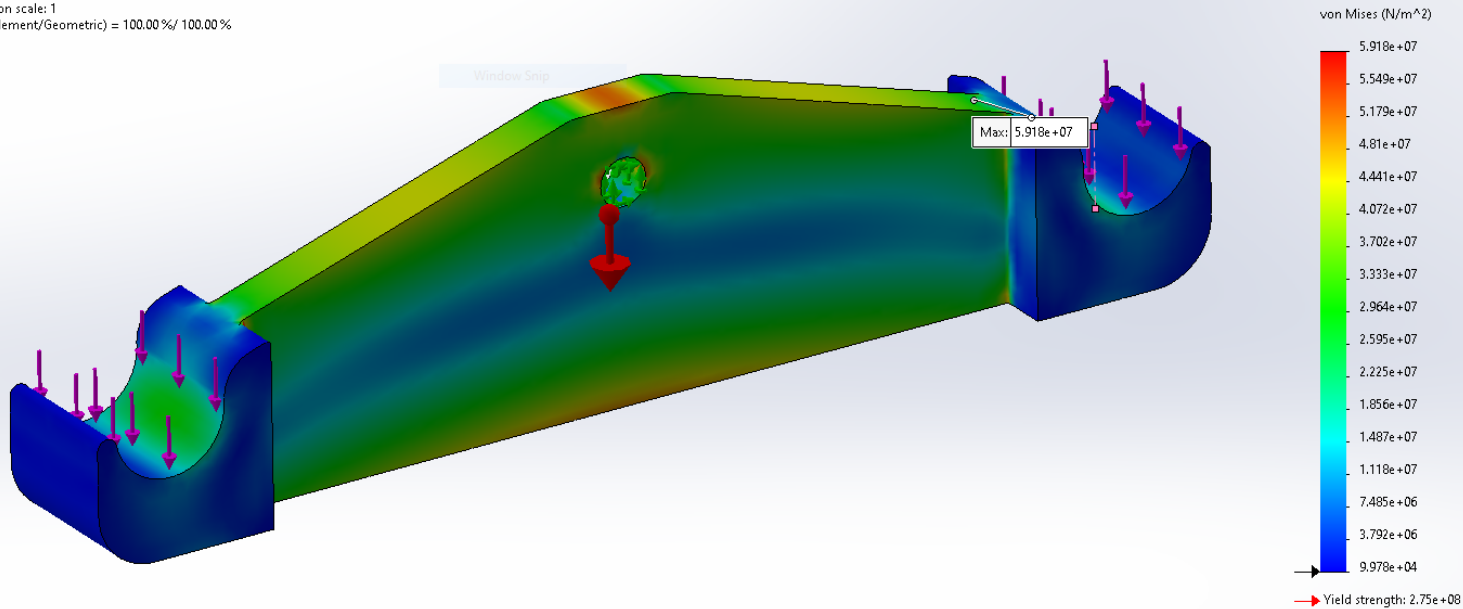


Our industrial location allows large machines and components to be delivered with minimal disruption. Our workshop features a complete machine shop and is supported by the most resourceful inventory of special tooling, precision measuring devices, and fixtures. This allows us the ability to handle and complete the most complex of projects.

# SPECIALTIES

## 3D MODELLING/ENGINEERING & DRAFTING HYPERMILL & SOLIDWORKS SOFTWARE

Model name: Conductor Lifting Jib Analysis  
Study name: Proof Load-WLL(-Default-)  
Plot type: Static nodal stress Stress1  
Deformation scale: 1  
Volume (Element/Geometric) = 100.00%/ 100.00%



**Staying up to date is critical to staying ahead and at the top of the game. Our software for engineering and manufacturing is automatically updated so our team and machines can operate to the highest standard. We use HyperMill, SolidWorks and AutoCAD to bring ideas to reality.**

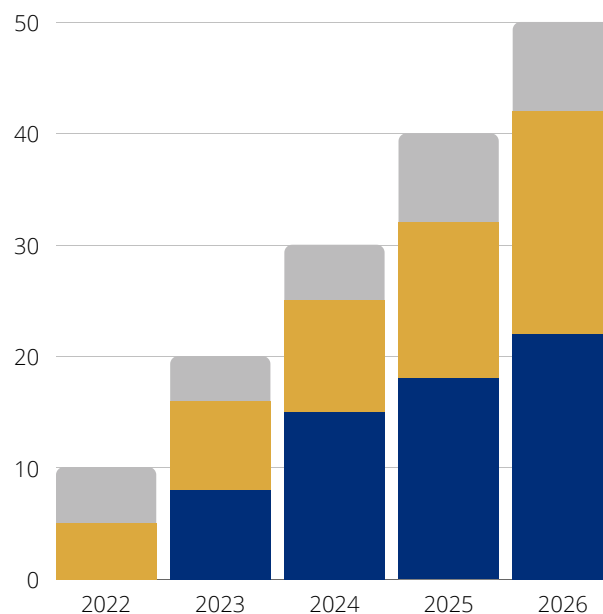


# FUTURE CAPABILITIES

## READY FOR THE FUTURE

**Our most exciting opportunity lies within our potential.**

**With room to expand, invest in new technology and capitalise on building a new engineering facility, our possibilities are exciting.**





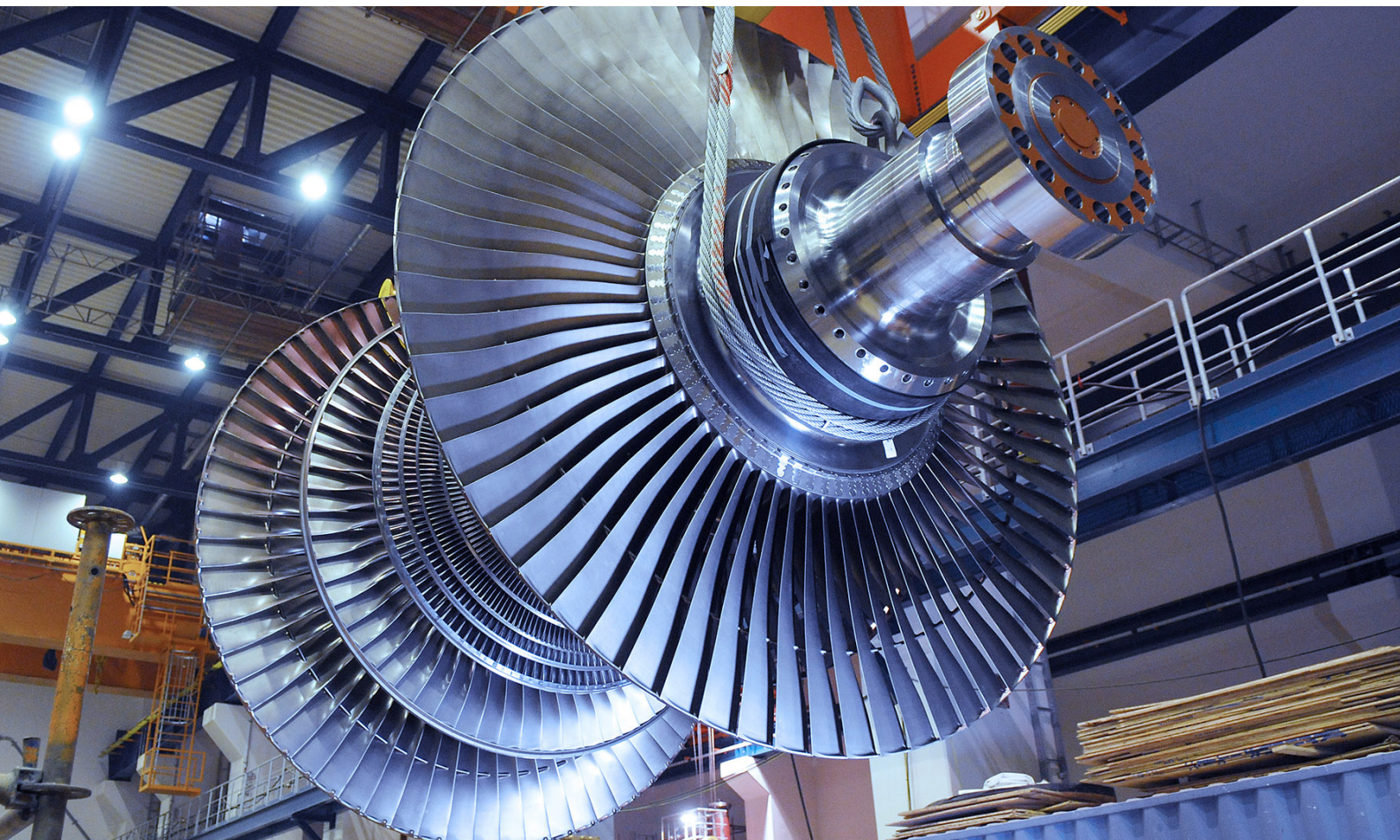
# EXPERIENCE

## POWER GENERATION

Penti-M Engineering Australia has been a trusted supplier to the Power Generation industry across the east coast of Australia for over 30 years.

Our engineering with excellence approach ensures we exceed our customers' expectations and consistently deliver during time-critical shutdowns and overhauls.

**KEEPING THE  
POWER ON FOR  
OVER 30 YEARS**





# CLIENTS & PROJECTS

## POWER GENERATION

### **DOWNER MITSUBISHI HITACHI**

Preferred choice as subcontractor for OEM, Hitachi, for east coast power stations for over 30 years! We are very proud of this achievement and our track record for high value, precision components.

### **STANWELL CORPORATION**

Consistently manufacture critical components from heat resistant super alloys that no other firm was able to. The finished components are better than OEM, withstand the extreme temperatures during service, and are manufactured at a very competitive price. The result is complete satisfaction from our clients.

### **SIEMENS ENERGY**

Machining of turbine blades, diaphragms, valve bodies, and turbine components during time-critical shutdowns for Queensland power stations.



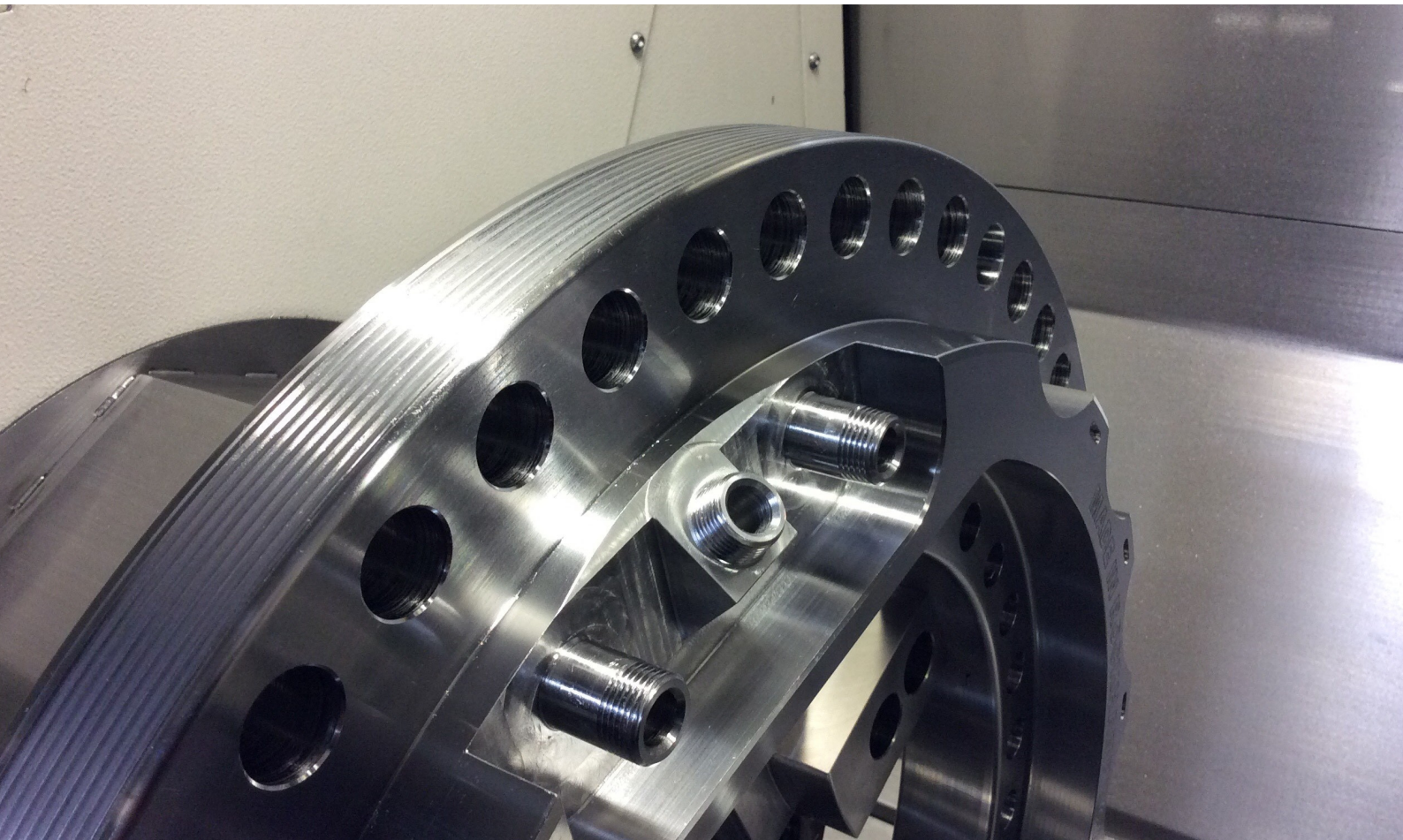


# EXPERIENCE

## MINING

Our focus on innovation and solving our customers' problems, has enabled us to serve the mining industry with innovative solutions.

**FOCUSED ON  
SOLVING  
PROBLEMS**





# CLIENTS & PROJECTS

## MINING

### MACKELLAR MINING

Repair and reclamation of Caterpillar components, including specialised welding and metal spraying services.

### MINING EQUIPMENT MAINTENANCE

Design and manufacture all componentry for an innovative hydraulic disassembly/assembly bench.

### KOMATSU (JOY GLOBAL)

Machine extensive range of critical flame paths for underground electrical enclosures and systems.

### COOK COLLIERY

Reverse engineer, program, and manufacture custom dolly car wheels and drive sprockets.

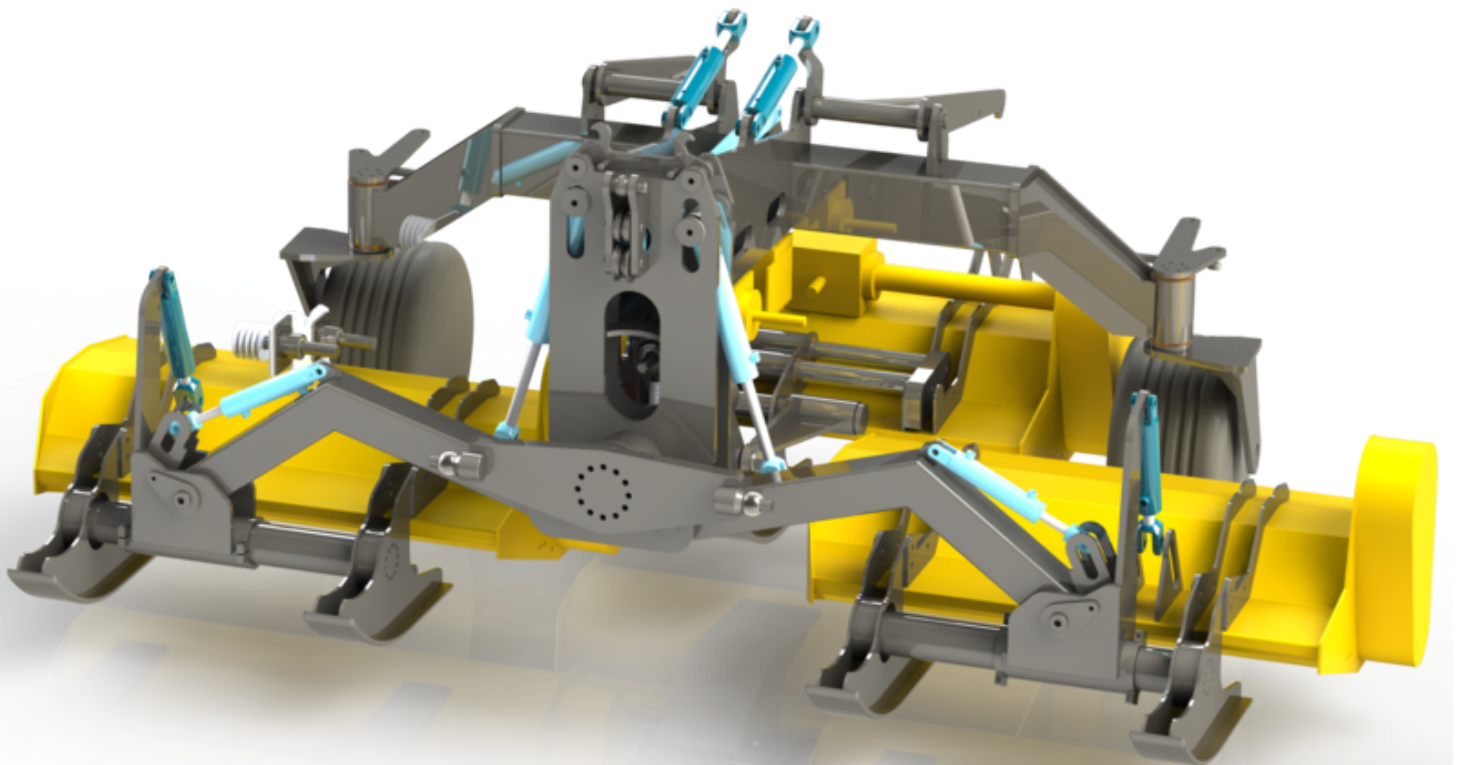


# EXPERIENCE

## RAIL

Engineering with excellence, seeking continuous improvement and utilising the latest technology has allowed us to be recognised as the leaders in supporting the Rail industry through our engineering and manufacturing for specialist track maintenance machines.

ENGINEERING  
WITH  
EXCELLENCE





# CLIENTS & PROJECTS

## RAIL

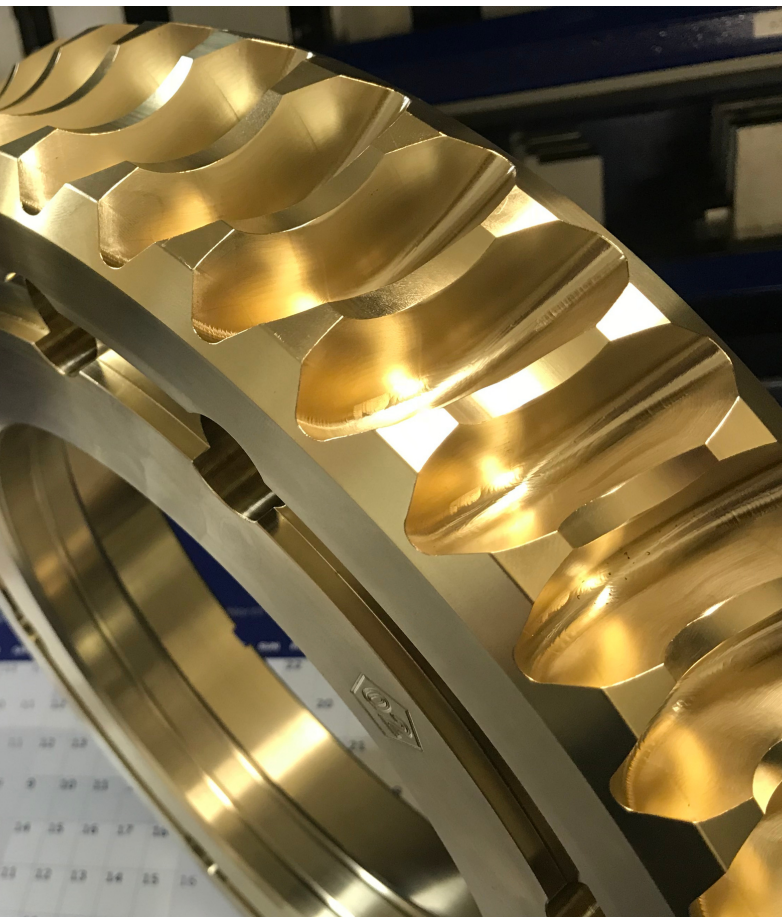
### AURIZON

Innovative solutions to dramatically extend the service life of track maintenance machines, reduce downtime, and provide critical cost savings.

Complete overhaul of machinery in-house, including reverse engineering, manufacturing, testing, and commissioning.

### SCHWARZ

Reverse engineer broken worm wheel gears, 3D model and program, perform material analysis, source unique castings, and manufacture new and improved componentry for track equipment. The outcome was superior parts, outperforming OEM at 1/3 of the price.





# THE FOUNDATIONS

## VISION

Penti-M Engineering's vision is to assist progressive companies to reach their goals by working in collaboration and offering precision machining and manufacturing services within the Space, Defence, and Aerospace industries.

## TRAINING & DEVELOPMENT

In an ever-changing industry with new technology on the rise all the time, it's extremely important to stay up to date and ahead of the competition. Our team attends regular manufacturing trade shows, networking events with industry professionals, and relevant training programs. Professional development is important and our team are encouraged and supported to excel and be the best in their fields.

As the local leaders in engineering we pride ourselves on fostering the talent of tomorrow through involvement with local schools and universities and are committed to training apprentices and engineers. We believe it's important to develop qualified and highly skilled team members in regional Australia for the future of our industry.





## HEALTH & SAFETY

Penti-M Engineering is committed to the provision of a safe and healthy work environment for our employees, contractors and clients.

Physical safety is only the beginning – the wellbeing and health of our employees as well as our approach to work/life balance all contribute to making Penti-M Engineering a sustainable and productive business.

Penti-M Engineering firmly takes the stance that it is not acceptable for any person to be harmed while at work. To further this value, Penti-M Engineering is committed to:

- Making safety our first priority;
- Keeping up with and exceeding industry-standard practices;
- Identifying, controlling and eliminating hazards;
- Proactively managing health and safety risks within our business;
- Providing regular training and resources to staff;
- Reducing risk at all levels, and
- Introducing injury prevention strategies.

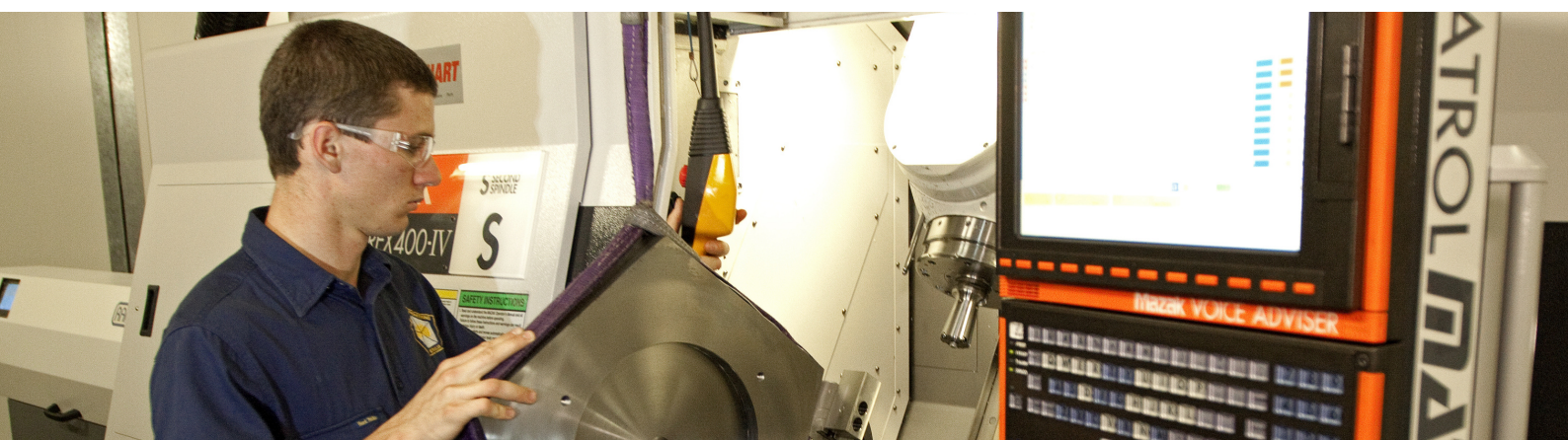
## ENVIRONMENT

Penti-M Engineering understands that our business may impact the environment through our work practices, products and purchases.

When it comes to the environment, Penti-M aims to meet or exceed environmental management industry standards.

Our management will make environmentally responsible decisions regarding sustainability of our business operations.

We bring positive attitudes to environmental considerations and realise that our whole team must be involved in taking care of the environment through our everyday actions. From turning lights off to environmentally friendly purchasing decisions where possible, Penti-M Engineering will consistently act in a manner that endeavours not to harm the environment.



# QUALITY

Penti-M Engineering has built our business reputation around our quality and precision standards. Without this focus on quality, our business cannot continue to grow in a manner commensurate to our vision.

Penti-M Engineering is committed to furthering our quality reputation by:

- Ensuring our work meets statutory obligations and quality standards;
- Constantly asking how we can improve: in design, in methodology and in delivery of our services;
- Training our staff to our high standards, and constantly challenging these standards;
- Encouraging constructive feedback from superiors and clients, during and after projects, and;
- Regularly evaluating the performance of our staff, subcontractors and suppliers.

# COMMUNITY

Penti-M Engineering are a proud part of the Central Queensland community and support other local businesses in our supply chain.

We provide equal employment opportunities to the local community and actively work with local academia to support new talent.

We believe in supporting the local community in other ways too and show our support with offering our services where possible and sponsor local clubs and athletes in the motorcycling community.

We see ourselves as part of the community in which we operate and actively strive to make a difference in the community.







# **PENTI-M ENGINEERING**

A U S T R A L I A

23 Park St  
North Rockhampton QLD 4701  
Australia

**P:** (07) 4927 3160

**M:** 0428 273 160

**E:** [info@penti-mengineering.com.au](mailto:info@penti-mengineering.com.au)

**[WWW.PENTI-MENGINEERING.COM.AU](http://WWW.PENTI-MENGINEERING.COM.AU)**